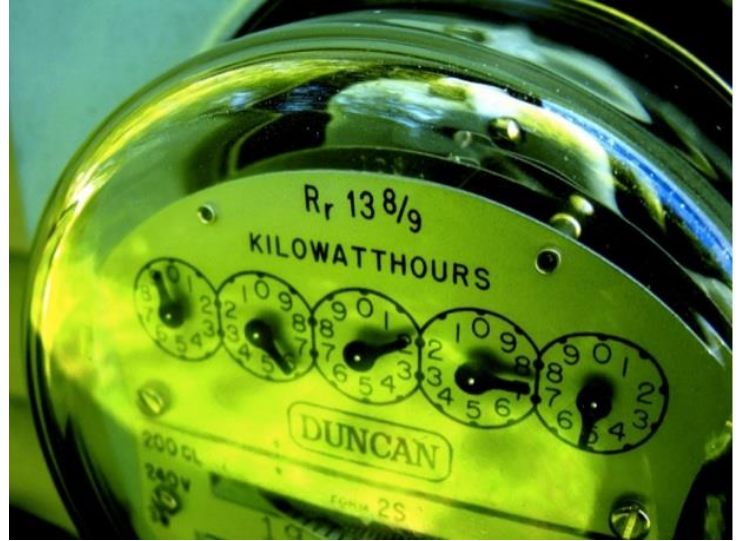


POWERLINK E-BOX SYSTEMS SAVE MONEY ON YOUR ELECTRIC BILL!

How does it work?

When an electric motor starts, it asks your utility company for power. The demand for electricity from your motor runs through the wiring to the panel box traveling to your meter, finally reaching the power company's transformer and then back down to you again. Throughout this process, the lines/wiring heats up and strains the motor and wiring. The heat generated is called watts.



During a normal electrical process energy is lost that you are being billed for by your utility company. You are being billed for that power, but are not able to use it. The PowerLink E-Box stores (recycles) (otherwise lost energy/watts) and releases energy to your motor when needed to function properly. This reduces the amount of heat on the wires and the motors in your business. Reducing this heat will lower your electricity bill and may increase the life of your motors up to 30%.

Inductive Motors are in your elevators, tool & die, fabricators, refrigeration, freezer, washer, dryer, ceiling fans, air compressors, pumps, air conditioning units, etc. If you use the old T-12 Fluorescent Lighting, the ballast is also an inductive load. Anything with copper winding that creates an electromagnetic field is an inductive load. Using methods from large industrial complexes, PowerLink reclaims wasted power and recycles electrical energy. It protects against amp surges and increases the capacity to your electrical panel by causing it to run cooler. By doing so, you will save money

"Over 16 Billion Dollars of Electricity is unusable energy, but billable in the U.S."
US Department of Energy

How We Know it Works?

The load for your power company is also inductive, just like the motors in your business (A/C, pumps, refrigerators, etc.). These are your power company's inductive loads, and the use of a capacitor system helps to correct their power factors. Power factor is the term used for a measure of load efficiency or efficiency of electrical power used. When you correct the power factor, it reduces demand. Your electric meter is a demand meter. With the proper use of a PowerLink E-Box system you can reduce demand and legally slow down your meter; **your electric company has been using this very same technology for 70+ years to correct their power factors.** Now why would your power company spend tens of thousands of dollars using the same capacitor technology PowerLink E-Box systems uses to correct their power factor if it didn't work?

It Does Work!

If you look around your neighborhood on the power poles, for about every 50 transformers, you will notice 1 of these banks of capacitor systems correcting the power factors of the transformers in your area.

How Many And What Size PowerLink E-Box Do I Need?

Usually in a business, it depends on the number of panels, voltages, single or 3 Phase, Power Factor and amps used. A preliminary estimation can be made by examination of a recent summer and winter electric bill. Only an analysis by a one of our trained technicians using our proprietary patented testing equipment will give you an accurate installation and sizing estimate at no cost or no obligation to you.

How PowerLink E-Box Systems Save Money

PowerLink E-Boxes lower electrical costs many ways more than just reduction of kilowatts use:

- In many areas, the electrical rate includes a penalty charge or hidden costs for a low Power Factor. The power factor is the ratio of the real power that is used to do work and the apparent power that is supplied to the circuit, or in other words power efficiency. Installation of PowerLink E-Box Systems on the electrical distribution system within a facility makes it unnecessary for the utility to supply higher amperage to operate inductive electrical equipment. The savings the utility company realizes in reduced generation, transmission, and distribution costs are passed on to the customer in the form of lower "Delivery" & "Generation" charges on electrical bills.
- A second source of savings derived in the form of increased KVA capacity in your electrical distribution system. Installation of PowerLink E-Box Systems to furnish the non-productive current requirements of the facility makes it possible to increase the connected load by as much as 20 percent without a corresponding increase in the size of the transformers, conductors, and protective devices making up the distribution system which services the load.
- Also your electrical "Delivery" charges can be decreased by lowering your overall Peak Demand. Peak Demand is based on the highest capacity or energy demand by you during any given one point in time, Once a year usually in summer when demand is highest the peak demand meter is reset by the electrical company. You are now charged for this one time highest demand for the rest of the year for your highest demand usage even if it is for only a matter of minutes once in the entire year. With proof of power factor correction the power company is required to reset your demand meter which will now reflect your electrical use reduction.

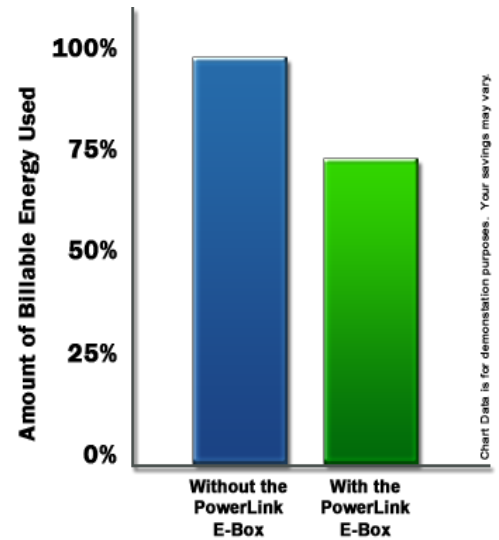
Benefits:

- Less total plant KVA for the same KW working power
- Savings on monthly electric bill are very significant in areas where peak usage penalties exist
- More KW working power for the same KVA demand
- Released system capacity allows for additional motors, lighting, etc. to be added without overloading existing distribution equipment

- Reduction in the size of transformers, cables and switchgears so you save capital.
- Improved voltage regulation due to reduced line voltage drop
- More efficient performance of equipment and motors
- Lower operating temperatures

Our clients range in a variety of Industries:

- Automotive Service
- Bowling Alleys
- Car Dealerships
- Cold Storage
- Convenience Stores
- Food Markets
- Manufacturers
- Office Buildings
- Resorts
- Schools
- Water Treatment



Typical Low Power Factor Industries:

- Saw mills - Uncorrected Power Factor 45%–60%
- Plastic (especially extruders) - Uncorrected Power Factor 55%–70%
- Machine tools, stamping - Uncorrected Power Factor 60%–70%
- Plating, textiles, chemicals, breweries - Uncorrected Power Factor 65%–75%
- Hospitals, granaries, foundries - Uncorrected Power Factor 70%–80%

You could see up to a 25% savings on your monthly electric bill with the PowerLink E-Box!

PowerLink E-Box Systems are:

- Assembled in an ISO 9003 Quality Management System Plant.
- 24 month money back guarantee on electrical savings
- 5 year manufacturer’s warranty
- UL listed and installed by certified electrician under local fire codes.

Analysis by a Licensed Professional Engineer is Simple, Fast and Free!
Please contact our office at your convenience for a no obligation discussion of the benefits.

Bob Czerwinski
513-751-6200 ext 210
bob@pesweb.us

Milt Liss
513-751-6200 ext 235
milt@pesweb.us

Matthew LaMey
513-751-6200 ext 290
matt@pesweb.us

Jack Maclean
614-868-9600
jack@pesweb.us

